

FLEISCHMANN
PERFEKTION & VIELFALT

Roco
Die Innovation der Modellbahn

z21start and WLAN-Package



Overview

- New Startsets with „z21start“ Page 3

- The „WLAN-Package“ Page 4
 - How to get the „activation code“ Page 5

- The Maintenance-Tool Page 6 - 7

- Connection between PC and z21/Z21 Page 8 – 10

- New digital components suitable for z21/Z21 Page 11 - 12

New Startsets with „z21start“

„Z21-start“ is replacing the old „Multimouse“ controller in startersets. This will give your customers a variety of benefits:

- CVs now readable
- Dataformats are now DCC and Motorola
- RailCom-compatible
- WLAN-compatible via optional module – **WLAN-Package (Art. Nr.: 10814)**
- Wireless controller via optional module – **WLAN-multiMaus (Art. Nr.: 10813)**
- PC Interface via optional module – **WLAN-Package (Art. Nr.: 10814)**
- Compatible with large layouts via optional module - **CDE-Booster-Adapter (Art. Nr.: 10789)**

Note: Z21-start is delivered with the LAN-plug disabled for control and driving inputs. However, you can receive updates and change the setup with the optional „Maintenance-Tool“.

The „WLAN-Package“

The WLAN-Package (Art. Nr.: 10814) includes an activation code for the LAN-plug and a pre-configured router.

After activation of the LAN-plug you can control the setup via smartphone, tablet, WLAN-multimouse (Art. Nr.: 10813) or PC.

The picture to the right shows the manual that is included in every starter-set.

FLEISCHMANN **Roco**

z21start*

z21start

LAN

Netzwerkschnittstelle kann für Einstellungen und Firmware-Update verwendet werden.

z21 WLAN Package

Das z21 WLAN Package (Art. Nr. 10814) enthält den vorkonfigurierten WLAN Router und Freischalt-Code für z21start.

Nach dem Freischalten ist die Netzwerkschnittstelle uneingeschränkt verwendbar.

Durch das z21 WLAN Package wird das Steuern von Zügen und Weichen mit Ihrem Smartphone oder Tablet über die bekannte Z21-App möglich. Diese bietet auch das ultimative Fahrerlebnis mit fotorealistischen Führerständen. Zusätzlich ermöglicht es die Verwendung der z21 multiMAUS (Art. Nr. 10813).**

Durch das z21 WLAN Package wird auch der Grundstein für PC-geführte Bedienung und Automation gesetzt (z.B. Rocrail®, iTrain®, TrainController®, etc.).**

Z21 Roc rail

*Eine Innovation von Fleischmann und Roco.
**Smartphone, Tablet, PC, Software, z21 multiMAUS und Ähnliches sind nicht im Z21 WLAN Package enthalten.

www.z21.eu | www.roco.cc | www.fleischmann.de

8061082025

WLAN-Package (Art. Nr.: 10814)

Instructions: How do I get the activation code?

Here is the PDF manual on how to obtain the activation code:



PDF-Datei

The „Maintenance-Tool“

The „maintenance-tool“ is our service-protocol for z21/Z21 and SmartRails and should be used by every owner of a z21/Z21 or a SmartRail!

Depending on the connected device there are various options available:

z21 and Z21:

- Firmware Update
- Update multiMaus
- Change general settings
- Change IP-settings
- Manage the R-BUS
- CV programming

Additionally with Z21:

- Manage LocoNet
- Decoder Update for Zimo Decoder

SmartRail:

- Firmware Update
- Change general settings
- Change IP-settings
- SmartRail Status
- SmartRail settings



The „Maintenance-Tool“

The „maintenance tool“ can be downloaded in the download section @ www.z21.eu.

You will also be able to enter the activation code via the maintenance-tool in the near future.

Important: Once you have the maintenance tool installed, it does not update itself automatically! Please check regularly online whether a newer version is available!

Instructions for „z21“ are also applicable for „z21start“.

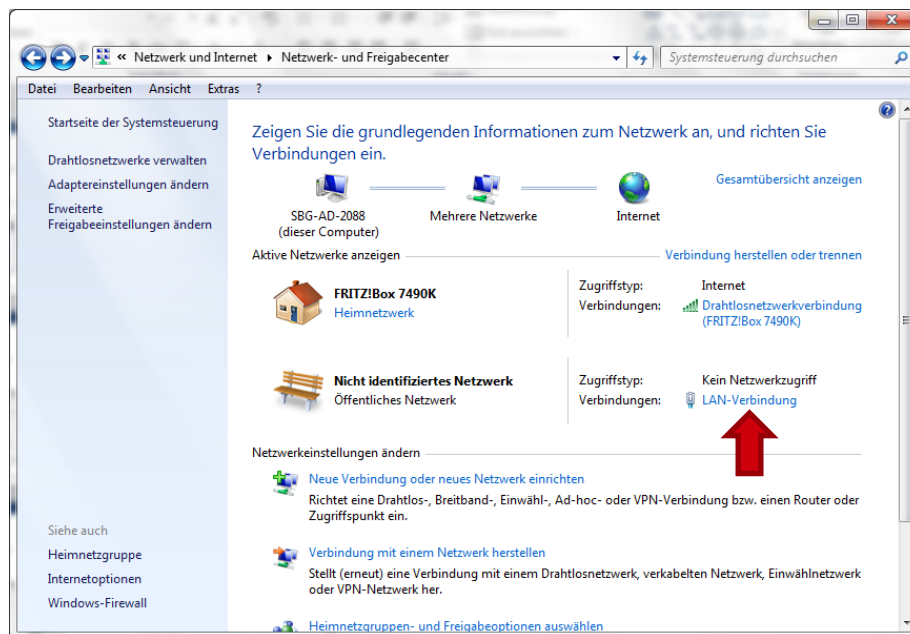


Connecting a PC and z21/Z21

We recommend to connect the router of the z21/Z21 to a PC via LAN-cabel or WLAN. This way there are no set-up changes to your PC necessary.

For connections without a router, the PC's system settings must be configured for a static IP-adress. To do so follow these steps:

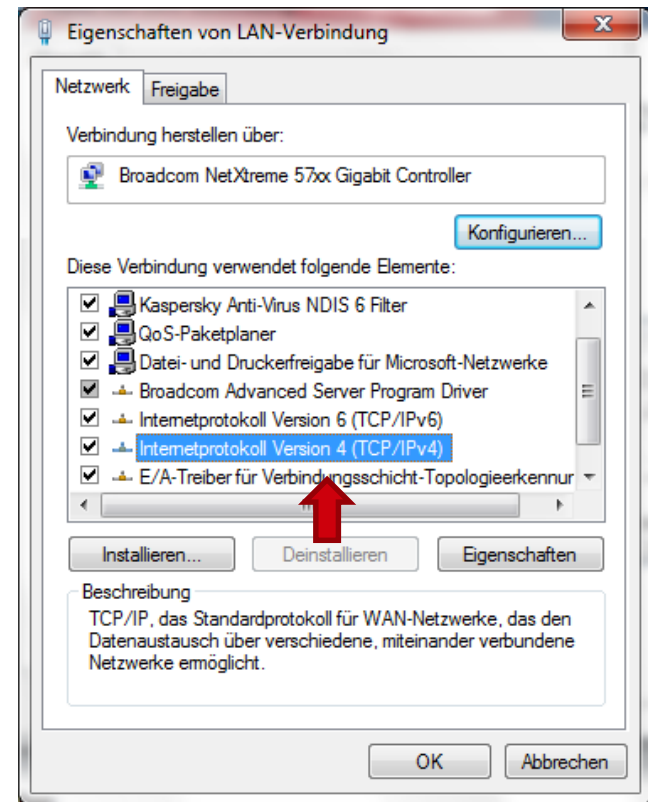
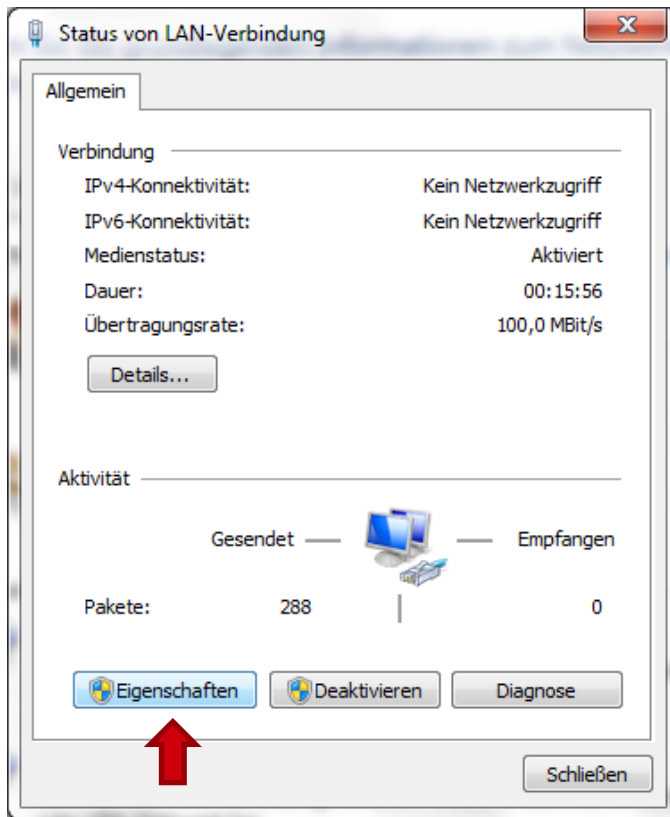
1. Go to network settings on your PC
2. Select LAN-connection and open the connection status.



Connecting a PC and z21/Z21

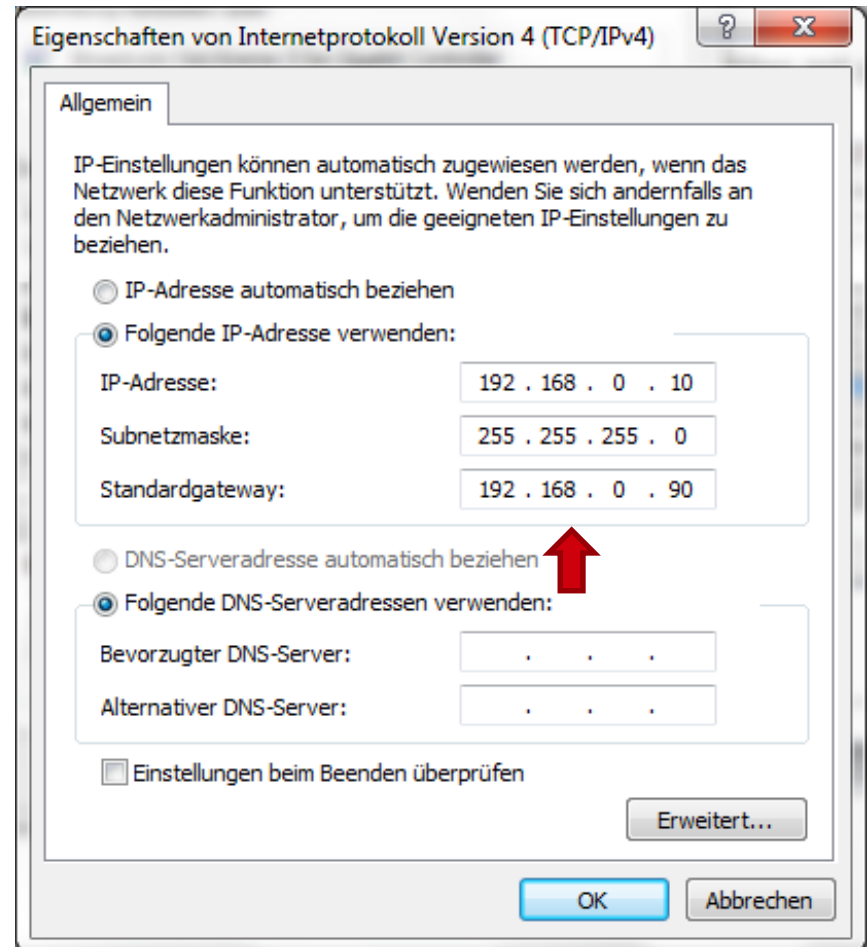
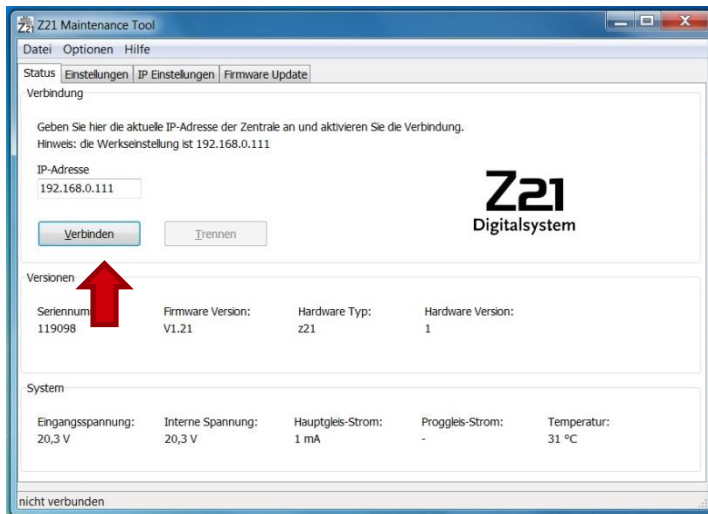
3. Open the settings for the LAN-connection

4. Open the settings for the internet-protocol version 4



Connecting a PC and z21/Z21

5. Change to „use following IP address“ and manually enter the IP address as shown to the right.
6. Open the „maintenance tool“ and connect your PC with the z21start/z21/Z21.



New digital components suitable for z21/Z21

With our new digital components, you will be able to use the full z21/Z21 potential including in the area of booster and feedback modules:

Booster (Art. Nr.: 10806) and Dual-Booster (Art. Nr.: 10807)

3A and 2x3A respectively, RailCom-Global-Detector, integrated electrical feeding for a loop, integrated break-generator, updateable via Z21, trackvoltage manageable via Z21

Note: **Power supplies are NOT included for the Booster (Art. Nr.: 10806) and the Booster-light (Art. Nr.: 10805) (see next page)!** You can use our switching power supply (Art. Nr.: 10851) to operate these devices.



New digital components suitable for z21/Z21

With our new digital components, you will be able to use the full z21/Z21 potential including in the area of booster and feedback modules:

Booster light (Art. Nr.: 10805)

3A, RailCom-Cutout, integrated electrical feeding for a loop



Z21 Detector (Art. Nr.: 10808)

Occupancy detector and feedback for 8 sections via power surveillance, locomotive identification via RailCom, updateable, optionally also for up to 8 track/reed contacts

Attention! The product picture to the right is from a pre-series model! The actual detector will also receive a black housing and can **ONLY** be used via the **CAN-Bus on the black Z21!**

